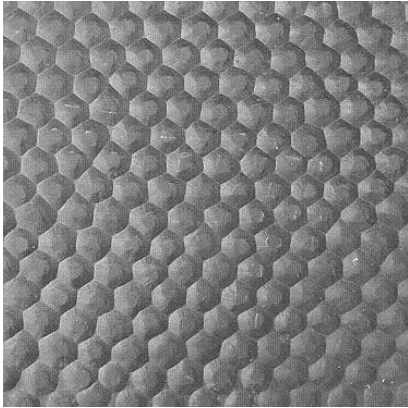


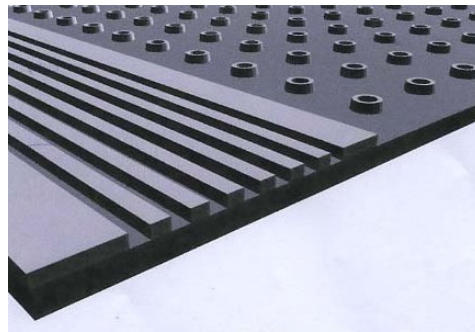
## CIRCULAR STUDDED ROLL MAT



- Top profile: Hammer
- Bottom profile: 7mm circular studs
- Thickness (including 7mm stud); minimum 17
- Optional; 20cm *solid edge with ribs* on one side, over the full length of the roll.
- Widths *with* solid edge: 180cm, 200cm, 220cm, 240cm
- Widths *without* solid edge: 165cm, 180cm, 200cm, 220cm
- Other widths will be cut from sizes above
- Will be delivered with nylon inlay



↑ Circular Studded bottom



↑ Optional solid edge